

# The Week @ Wyland

**March 24, 2022**

**Dr. Laurie Tocci**

## Open House Revival!

It was so refreshing to see Wyland's halls and classrooms come back to life after a 2-year hibernation! Both Open House evenings were relaxed and happy occasions. Our students love to share their school with family!

The PTO Basket Auction in the cafeteria was an added bonus for all, as it gave everyone an opportunity to reconnect with people we haven't seen in quite a while.

Thank you to all students, teachers and parents for participating in our progression back to almost normal!

Happy Spring!

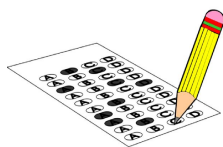
Dr. Laurie Tocci



## PSSA Testing Dates - Grades 3-5

April 25-27 - ELA Grades 3-5  
May 2-4 - Math Grades 3-5  
May 5-6 - Science Grade 4

Please do not schedule appointments or travel on these dates. No vacation absences during these days will be approved.



## Monday, March 28

- \*Learning Lab (3:30-4:30 PM)
- \*Kids of Steel (3:45-4:30 PM)

## Tuesday, March 29

- \*Learning Lab (3:30-4:30 PM)
- \*Intramurals (3:30-4:40 PM)
- \*Girls on the Run (3:30-5:00 PM)
- \*Mindfulness Club for Kids (3:45-4:45 PM)
- \*Pasta Dinner Server Training (3:50-4:50 PM)

## Wednesday, March 30 - Blue&Gold/KindKid

- \*Learning Lab (3:30-4:30 PM)

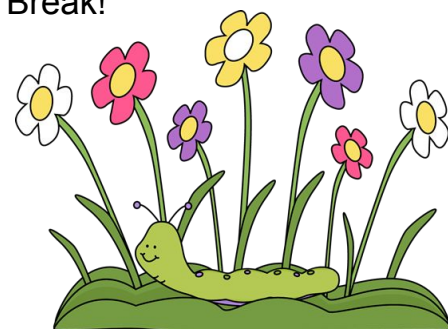
## Thursday, March 31

- \*Learning Lab (3:30-4:30 PM)
- \*Girls on the Run (3:30-5:00 PM)

## Friday, April 1

## Future Dates:

April 5.....Wyland Pasta Dinner  
April 6.....Wyland PTO Meeting  
April 8.....Report Cards on Parent Portal  
April 13.....Early Dismissal (1:45 PM)  
April 14-18..Spring Break!



### New Flyers:

- PSSA Information for Gr. 3-5 Parents
- Odyssey of the Mind Spirit Wear Sale
- HHS Spring Blood Drive



### Wyland Flyers:

- Camp Invention
- Kindergarten Registration
- HAAE Volunteer Board
- Hampton Jr. Football
- Mabel's Labels PTO Fundraiser
- Metz Food Service
- Camp Guyasuta STEM Camp
- Children's Health Insurance (CHIP)

### Camp Invention 2022

Looking for wonderful summer opportunities for your children? Registration for Camp Invention is available on the District website. Click [here](#) for the Registration and Health Forms. This year's modules are very interesting!

- Robotic Aquatics
- Spacecation
- The Attic
- Marble Arcade
- 



Camp Invention®

If you have any questions, please contact Dr. Laurie Tocci, 412-492-6346 or [tocci@ht-sd.org](mailto:tocci@ht-sd.org)

### Kindergarten & New Grade 1 Registration

Registration for Kindergarten and any first-grade students new to Hampton Schools for the 2022-2023 school year will take place virtually.

Click [here](#) for registration directions.

Please see the Wyland Flyers for more information.

All families are encouraged to complete the online registration process as soon as possible.



Thank you Wyland PTO for providing delicious grab and go dinners for our teachers on Open House evenings! Your kindness is very much appreciated! Yum!

### Ukrainian Aid Collection:

Wyland is pairing with the Rankin Croatian Club in collecting items to send to Poland for the Ukrainian refugees. Wyland will be collecting the following items: Basic personal hygiene products (soap, tissues, toothpaste & toothbrushes, sanitary napkins, solid deodorant, wet wipes etc.), phone chargers, paper products (paper plates, plastic cups, plastic utensils), tea & coffee, diapers, blankets, rain coats, dry pet snacks. Donation Boxes will be in the main hallway at Wyland. Items may be sent with the students, or families can drop off donations in the office vestibule. **Items will be collected through March 30.**



### Covid-19 Symptom Checklist

You can find the updated Covid-19 symptom checklist [here](#).

Please contact Dawn Gunnett, our Health Office Nurse, with any questions.

[dawn.gunnett@ht-sd.org](mailto:dawn.gunnett@ht-sd.org) or 412-492-6347

### My Student is Vaccinated...

Now that children have the opportunity to be vaccinated against COVID-19, if your child is identified as a close contact, the school nurse will ask if they are fully vaccinated. Close contacts who are fully vaccinated are not required to quarantine, but do need to be closely monitored for symptoms.

If your child is vaccinated and you would like to provide documentation to the school nurse, you may do so by sending in a copy of the completed vaccination card.

# WYLAND PTO UPDATE

## PTO Executive Board Election | Spring 2022

### [NOMINATIONS | CLICK HERE](#)

Nominations for Open Positions on the PTO Executive Board and for two Key Communicators are open at this time.

Executive Board members serve a two year term and positions are filled on a rotating basis as outlined in the Wyland PTO ByLaws.

The positions:

- Co-President (2 year term)
- Communications Sec (2 year term)
- Volunteer Coordinator (2 year term)
- Assistant Treasurer (2 year term)
- Key Communicator A (1 year term)
- Key Communicator B (2 year term)

### **Bylaw Notations:**

Officers serve as a liaison between district administration and the Wyland community. Two Key Communicators will be elected this year; one for a 2 year term and one for a 1 year term to allow the terms to move to an alternating cycle in future years.

This is the first year Key Communicator positions are being elected as outlined in changes approved to the Wyland PTO Bylaws in October 2021. Previously this positions were appointed. This change was made in an effort to be transparent and inclusive of all individuals interested in pursuing this positions.

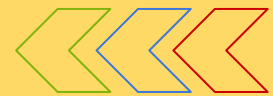
Please email questions or concerns to:  
[wyland.PTO@gmail.com](mailto:wyland.PTO@gmail.com)

## Pasta Dinner April 5th



Pasta dinner is a time honored tradition at Wyland Elementary where the 5th grade students host the Wyland families to an Italian meal and allow everyone a night off of cooking. The sale of these meals benefit your PTO and the proceeds from the bake sale and tip jars go to the 5th grade class. The dine-in option is available for 5th Graders (and up to 9 guests per student). Families K-4th, please take advantage of our takeout option.

## Pre-Order Takeout



Please fill out the order form **HERE**. Each meal is \$8 and includes penne pasta, a side salad, and a breadstick. Payment can be sent via Venmo to @wylandelementary-PTO, check made out to Wyland Elementary PTO, or cash at the time of dinner on April 5th..



Click for your March/April  
Lunch Menu

Dear Parent/Guardian:

In an era of cell phones, smartphones and other electronic devices which can easily photograph and instantly share photographs, confidential and secure test materials can be easily compromised. Not only is it expensive to replace a compromised test item, the material contained in the PSSA and Keystone Exams is copyrighted property of the Commonwealth of Pennsylvania. Copying or duplicating the material from the assessment, including the taking of a photograph of secure assessment material, is a violation of the federal Copyright Act. Penalties for violations of the Copyright Act may include the cost of replacing the compromised test item(s) or fines of no less than \$750 up to \$30,000 for a single violation (17 U.S.C. § 101 et seq.).

In order to ensure reliable test results and to avoid the cost of replacing test items, the Department of Education requires schools to set rules and take certain steps to protect test materials. Electronic devices such as but not limited to cell phones, smartphones, smartwatches, E-readers, Nooks, Kindles, iPods, tablets, camera-ready devices, and any other electronic device which can be used to photograph or duplicate test materials, access the internet and/or communicate with others during the administration of the PSSA or Keystone Exams are not permitted in any testing site. Please speak with your child and let him or her know that the possession and/or use of a cell phone or other electronic device during the administration of the PSSA or Keystone Exams will result in consequences.

You will be contacted by the school if your child is discovered using and/or having a cell phone or other unapproved electronic device in his or her possession during the administration of the PSSA or Keystone Exams. Students who ignore this directive will be subject to the school's discipline policy and the Department of Education's requirement that the student's test will not be scored and the student will be required to retake the entire exam. The electronic device will be held by school staff, and the device's stored photographs and other functions will be examined with your permission. You may request to be present when the electronic device is examined. If a photograph of the PSSA or Keystone Exam is discovered or if permission to search other functions of the electronic device is refused, the device will be held by the school staff. The Pennsylvania Department of Education holds the copyright to all material contained within the PSSA and Keystone Exams, the Pennsylvania Department of Education will be contacted and further action may be taken.

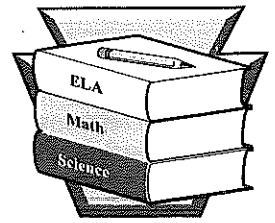
If, after testing is complete and test materials have been returned, it is discovered that a student used and/or had a cell phone or other unapproved electronic device in his or her possession during the administration of the test, the school's discipline policy will be followed and the student's test will not be scored.

## Frequently Asked Questions

# Information for Parents or Guardians

## Pennsylvania System of School Assessment (PSSA)

English Language Arts Assessment, April 25–29, 2022  
Mathematics and Science Assessment, May 2–13, 2022



### GENERAL INFORMATION ABOUT THE PSSA

#### Which schools participate?

All school districts and charter schools participate in the assessments. Nonpublic and private schools may also participate on a voluntary basis.

#### Which students take the assessments?

Except for a very few students who meet specific criteria for participation in an alternate assessment, all students are included in the assessments as outlined below:

ELA & Mathematics—Grades 3, 4, 5, 6, 7, and 8  
Science—Grades 4 and 8

#### Who decided what the assessments should measure?

Groups of educators from all levels of education in Pennsylvania chose the areas of knowledge and skills upon which the assessments are based. The groups included teachers, supervisors, curriculum directors, and college specialists. They also reviewed, edited, and approved the test items.

#### Who administers the assessments?

Each school chooses the person(s) who will administer the assessments. In most cases, these are teachers in the students' building.

#### How are the results reported?

Two copies of the individual student report for all assessments will be sent to all schools and districts that participate for distribution to parents, teachers, school counselors, and/or principals. The state will not receive any report with individual names included.

School-level reports will be used for curricular and planning purposes. School districts and charter schools may publish the results of PSSA testing for each school. The state will also release school-by-school assessment data.

#### May parents see the assessments?

Yes, under one circumstance. School entities are required to have policies to ensure that parents or guardians have the right to review a state assessment in the school entity during convenient hours for parents or guardians from the time testing materials are received to the end of the make-up schedule in order to determine whether a state assessment conflicts with their religious belief. This is the only reason allowable under regulation.

Confidentiality agreements must be signed, and no copies of the assessments or notes about assessment items will be permitted to leave the school. If after reviewing the test, parents or guardians find the test to be in conflict with their religious belief and wish their student(s) to be excused from the test, the right of the parents or guardians will not be denied upon written request to the applicable school district Superintendent, charter school Chief Executive Officer, or AVTS Director. Parents or guardians should contact their child's school to make arrangements to review the test.

#### Report Testing Irregularities

Parents/guardians who believe that a testing irregularity may have occurred may email [ra-edirregularities@pa.gov](mailto:ra-edirregularities@pa.gov) or call 844-418-1651 to report the incident.

### INFORMATION ABOUT THE ENGLISH LANGUAGE ARTS ASSESSMENT (grades 3 through 8)

#### How long does the assessment take?

The entire English Language Arts assessment takes approximately three to four hours to complete. Your school district will inform you about the assessment schedule.

#### What does the assessment include?

Each student completes three sections of questions for the English Language Arts assessment. Some portions will be the same for all students, and some will consist of different groups of questions.

#### What types of questions are on the assessment?

Students respond to multiple-choice, evidence-based selected-response, and constructed-response questions. In a multiple-choice question, the correct answer(s) is chosen from four options. Evidence-based selected-response questions have two parts, and students select one or more answers for each part. Constructed-response questions may include a short-answer (grade 3) or text dependent analysis (grades 4 through 8). Short-answer questions require students to compose a brief response to support their answer. For the text dependent analysis question, students analyze a text and use evidence from the reading passage to compose an essay.



### **How are written responses to constructed-response items scored?**

The written responses for English Language Arts are scored by evaluators trained in applying an ELA-specific scoring guideline. For short-answer questions, scores are based on content only. Spelling and punctuation are not included as part of the scoring process. Responses to text dependent analysis questions are scored based on both content and writing skills.

### **What is assessed in English Language Arts?**

The English Language Arts assessment addresses six major reporting categories as well as two text types. Students respond to standalone multiple-choice items assessing language. Additionally, students read a number of passages from literature and informational genres and respond to questions about these passages that indicate both comprehension and reading skills and the students' analysis and interpretation of different types of texts.

### **INFORMATION ABOUT THE MATHEMATICS ASSESSMENT (grades 3 through 8)**

#### **How long does the assessment take?**

The entire mathematics assessment takes approximately two to three hours to complete. Your school district will inform you about the assessment schedule.

#### **What does the assessment include?**

Each student completes two sections of questions for the mathematics assessment. Some portions will be the same for all students, and some will consist of different groups of questions.

#### **What types of questions are on the assessment?**

Students respond to two types of questions: multiple-choice and open-ended. In a multiple-choice question, the correct answer is chosen from the four presented options, while open-ended questions require students to compose their responses. Open-ended questions generally require students to provide detail in support of their answers (such as showing or describing the steps performed to complete a calculation).

#### **How are written responses to open-ended items scored?**

The written responses for mathematics open-ended items are scored by evaluators trained in applying a mathematics-specific scoring guideline. In mathematics, scores are based on content only. Spelling and punctuation are not included as part of the scoring process.

### **What is assessed in Mathematics?**

The mathematics assessment addresses five major reporting categories across four clusters. The reporting categories assessed and the proportion of questions in each reporting category vary by grade level. As a part of the assessment of Cluster A, Numbers and Operations, students in grades 4 through 8 respond to a set of questions without a calculator. Constructed-response items may require the students to show all of their work (e.g., calculations, graphs, drawings) and/or to explain in writing how they solved the problems.

### **INFORMATION ABOUT THE SCIENCE ASSESSMENT (grades 4 and 8)**

#### **How long does the assessment take?**

The entire science assessment takes approximately one to two hours to complete. Your school district will inform you about the assessment schedule.

#### **What does the assessment include?**

Students in grades 4 and 8 complete two sections of questions for the science assessment. Some portions will be the same for all students, and some will consist of different groups of questions.

#### **What types of questions are on the assessment?**

Students respond to two types of questions: multiple-choice and open-ended. In a multiple-choice question, the correct answer is chosen from the four presented options, while open-ended questions require students to compose their responses. At grade 8, the science assessment also includes science scenarios.

#### **What is a science scenario?**

A science scenario contains text, graphics, charts, and/or tables and uses these elements to describe the results of a class project, an experiment, or other similar research. Students use the information found in a science scenario to answer multiple-choice questions.

#### **How are written responses to open-ended items scored?**

The written responses for science open-ended items are scored by evaluators trained in applying a science-specific scoring guideline. In science, scores are based on content only. Spelling and punctuation are not included as part of the scoring process.

#### **What is assessed in science?**

The science assessment addresses the four major reporting categories: The Nature of Science, Biological Sciences, Physical Sciences, and Earth and Space Sciences. The proportion of items in each reporting category varies by grade level.

# Help support Hampton Township Odyssey of the Mind Association

HTSD Odyssey of the Mind Spirit Wear Sale  
is going on *through Monday, March 28!*

There are several shirt styles to choose from:



Click the link (<https://shieldsembroidery.tuosystems.com/stores/hampton2022>)  
or scan the QR code:



Pickup will be at Wyland during  
the week of April 18th (date/time TBD),  
or you can choose to pay to have your  
item(s) shipped directly to your home

# Be a part of something bigger than yourself



## Hampton High School and Community Blood Drive

**WEDNESDAY, APRIL 6**

**7 A.M. TO 7 P.M.**

**HAMPTON HIGH SCHOOL**

**AUXILLARY GYMNASIUM**

**2929 MCCULLY ROAD**

**ALLISON PARK, PA 15101**

To make an appointment:

**Students:**

See Ms. Haynes, School Nurse.

**Community members:**

Visit [vitalant.org](https://vitalant.org), then click on "Make an appointment" or "Donate" and search with group code HS010029 or call Melanie Haynes at 412.492.6384.

**APPOINTMENTS RECOMMENDED**

For more information or to schedule a donation, call **412.209.7000** or visit us at **[vitalant.org](https://vitalant.org)**  
Find us @vitalant:   

**vitalant**  SM



## **Attendance/Absences**

When a student is absent, parents/guardians should call (412) 486-6000 by 9:15 AM to report the reason for absence. An automated call will be sent for all absent students, even those whose parents/guardians have reported the absence. Upon returning to school, the student must bring a written excuse stating the reason for absence or a medical excuse signed by a physician.

## **School Hours for 2021-2022:**

Regular School Day (Doors will open at 8:00 AM)

- Grades 1-5: 8:45 AM -3:30 PM
- AM Kindergarten: 8:45 AM -11:25 AM
- PM Kindergarten: 12:50 PM - 3:30 PM

**Note:** Students will be marked Tardy after 8:55 AM

Early Dismissal Days:

- Grades 1-5: 8:45 AM -1:45 PM
- AM Kindergarten: 8:45 AM - 10:45 AM
- PM Kindergarten: 11:45 AM - 1:45 PM

2-Hour Delay Days:

- Grades 1-5: 10:45 AM - 3:30 PM
- AM Kindergarten: 10:45 AM - 12:40 PM
- PM Kindergarten: 1:30 PM - 3:30 PM



## **Early Dismissal Dates: Students are dismissed at 1:45 PM on these dates:**

Friday, September 17, 2021

Friday, October 8, 2021

Wednesday, November 24, 2021

Tuesday, December 21, 2021

Friday, January 14, 2022

Thursday, February 17, 2022

Thursday, March 17, 2022

Wednesday, April 13, 2022

Friday, May 13, 2022

**Note:** If there is a 2-hour delay on an early dismissal day, the early dismissal is canceled and students will follow the 2-hour delay schedule

## **Other Early Dismissal Dates:**

Thursday, November 11: 12:45 PM Dismissal for Parent/Teacher Conferences

Thursday, June 9: 11:45 AM Dismissal

Friday, June 10: 11:45 AM Dismissal (Last day of school)

# Communication

Communication Tool	Location
School Calendar	Summer 2021 Mailed Home
The Week@Wyland	<a href="https://hwe.ht-sd.org/">https://hwe.ht-sd.org/</a> <i>Under Featured Information</i>
District Website	<a href="http://www.ht-sd.org">http://www.ht-sd.org</a>
PTO Email/Newsletter	wyland.pto@gmail.com
Student Take-Home Folders	In Backpacks
Infinite Campus (Student Management System)	Parent Portal: Links Icon on District Website ( <a href="http://www.ht-sd.org">www.ht-sd.org</a> ) OR <a href="https://ht-sd.infinitecampus.org/campus/portal/hampton_township.jsp">https://ht-sd.infinitecampus.org/campus/portal/hampton_township.jsp</a>
Wyland Facebook Account	Search for Laurie Tocci (laurie.tocci.3)
Twitter	@WylandElementa1
Wyland PTO Facebook Page	To protect the privacy of Wyland families, the Wyland PTO Facebook page is private, but any Wyland parent/guardian is invited to join. Contact the Wyland PTO to learn how. (President.WylandPTO@gmail.com)



**Wyland Elementary School**  
**2284 Wyland Avenue**  
**412-492-6345**